

How to Assemble

Slat Window Boxes Metal Brackets for Wall Mounting



Download Instructions

Descarga las instrucciones
Instructions de téléchargement
Anleitung herunterladen



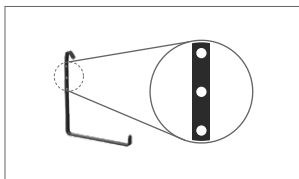
CRESCENT
garden

TruDrop^{ONE}

Parts:



A Slat Window Box Planter



B Metal Brackets in Spring steel

Hardware not included

Flat head screw



C Wall Mounting Screws and Anchors

Instructions:

1

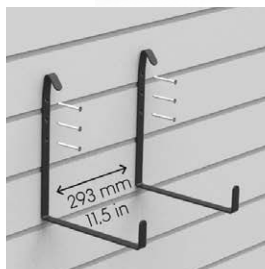
S



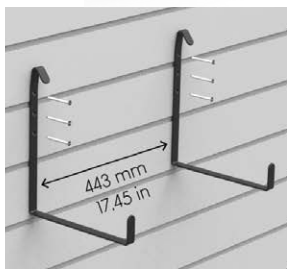
M



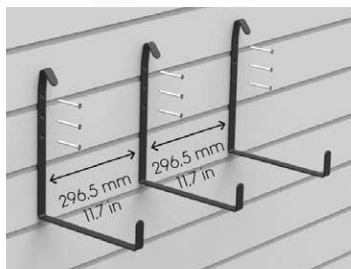
L



X2 | X6

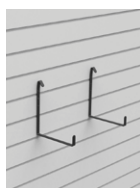


X2 | X6

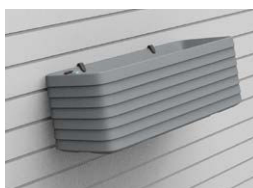


X3 | X9

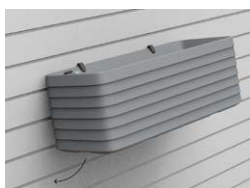
2



Hang the Metal Brackets to the wall.



First insert the upper edge of the planter under the bracket clip.



Then, swing the bottom of the planter towards the wall until the clips on lower part of the bracket clips are fully inserted into the planter openings.



Now it's secured!



We love to see gardens grow, share your stories with us or connect to ask us for advice.



/crescentgardens



/crescentgarden



/crescentgarden